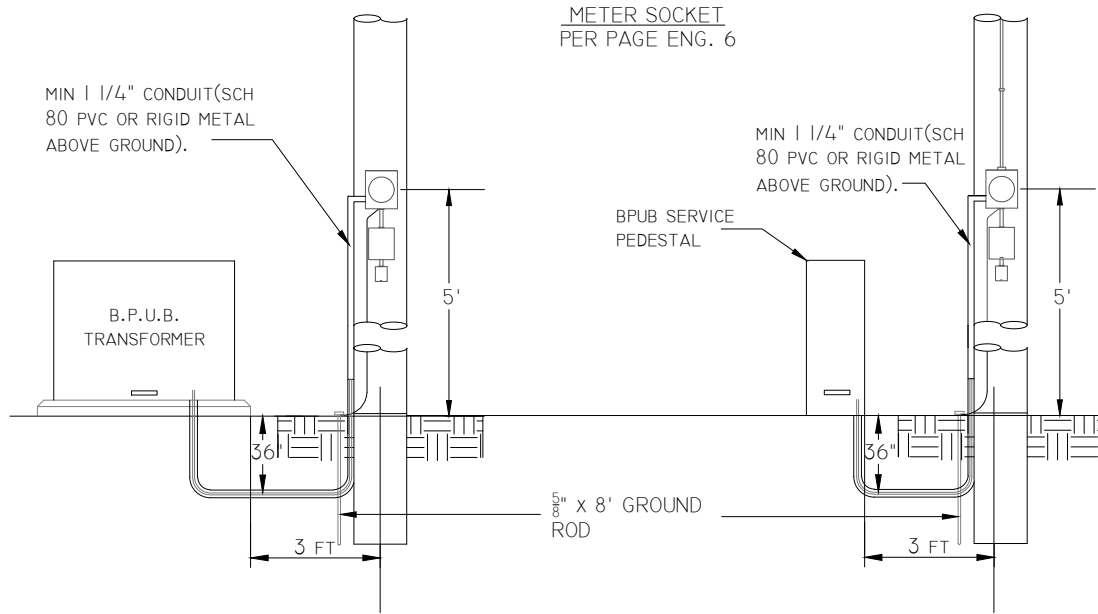
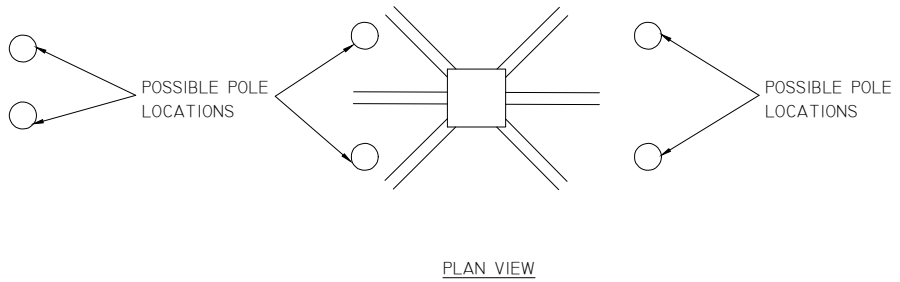
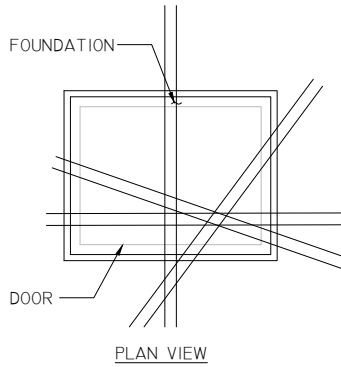


# BROWNSVILLE PUBLIC UTILITIES BOARD ELECTRICAL ENGINEERING DEPARTMENT



ELEVATION VIEW  
DASHED LINES ARE APPROXIMATE LOCATIONS  
OF UNDERGROUND ENERGIZED CABLES.



**NOTE:**

1. ALL COMPONENTS SHALL BE IN ACCORDANCE WITH THE NATIONAL ELECTRICAL CODE AND LOCAL CODES.
2. CUSTOMER TO PROVIDE 36" OF SERVICE ENTRANCE CONDUCTOR BEYOND CONDUIT.
3. RECEPTACLES SHALL HAVE APPROVED GROUND FAULT CIRCUIT PROTECTION, AS REQUIRED BY LOCAL CODES.



**STANDARD DISTRIBUTION CONSTRUCTION**  
**TEMPORARY SERVICE FROM**  
**UNDERGROUND RESIDENTIAL DISTRIBUTION**

**D-1**

DEVELOPED BY:	STANDARDS COMMITTEE
APPROVED:	SEP 2020
DRAWING NUMBER	STD-D-106

